

Connect to the Lincoln Re Network Using Dial-Up Networking

What Is It?

Dial-up networking is a part of Microsoft® Windows NT® Remote Access Service that allows a computer to connect to the home office network via a telephone connection.

Dial-up networking allows you to work with the computer almost as if you were in the office. Once connected you have access to network shared drives (such as the S: and Y: drives), the mainframe, the Internet and intranet, and network applications (such as LegacyLinc and CPS). Corporate (Novell) drives are not available.

How Does It Work?

The computer must communicate with the network constantly for the duration of the connection. This communication takes place over regular telephone lines that the computer connects to with the modem. Therefore, incoming or outgoing calls cannot be received or made on the same line the computer is using for dial-up networking.

The modem cannot be connected directly into a telephone system like those found at many offices (including ours) and some hotels. Plugging the modem directly into a telephone jack may damage the modem; a special port (often labeled *data* or *analog*) is necessary. Some locations provide such a port on the side of the telephone or as a separate wall jack. If you do not know where to find a data or analog port at your location, ask someone in the office or contact the concierge or business center at a hotel.

Remember that the computer performs slower when using dial-up networking. Response time depends on many variables, from the quality of wire that carries the signal to the amount of distance between the home office and your current location.

There is no 800 or toll-free number available for dial-up networking as there is for Novell® GroupWise® Remote.

How Do I Use It?

Connect the Modem

Dell Latitude CP

The computer is equipped with a 3Com WinModem. It is located on the left side of the computer near the back (Figure 1 Item 11). The modem cable is black and has a flat connector on one end and a telephone connector on the other. Plug the flat connector into the modem card and the telephone connector into the telephone jack. The flat connector fits into the modem card in only one direction and will not fit anywhere else on the computer.

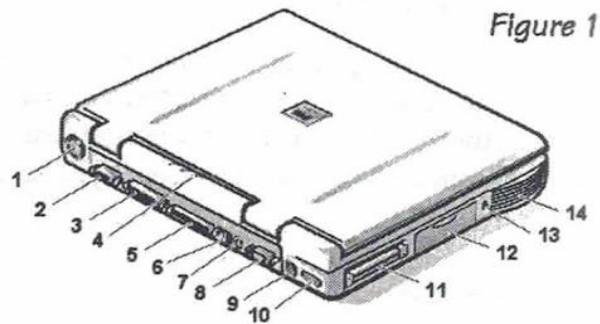
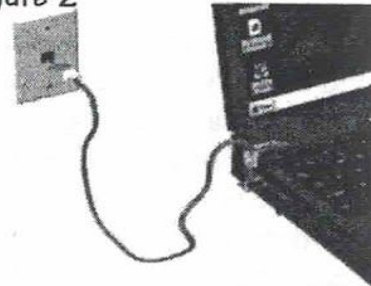


Figure 1

Dell Latitude CPi

The computer is equipped with a 3Com WinModem. It is located on the left side of the computer near the back (Figure 1 Item 11). Press to eject the XJACK connector. This connector is springloaded; press once to eject it, push it in to retract it. Insert one end of the telephone cable into the XJACK (Figure 2) and the other into the telephone jack.

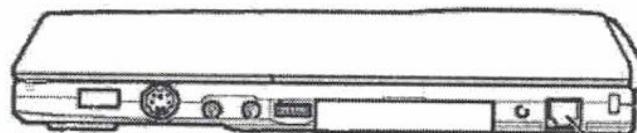
Figure 2



Dell Latitude LT

The computer is equipped with a built-in modem. The modem jack is located on the right side of the computer (Figure 3). Insert one end of the telephone cable into the modem jack and the other into the telephone jack.

Figure 3 **Right**



Modem Jack

Dial

1. Open the computer and turn it on.

Dell Latitude CP and CPi

The startup process reaches the screen where you can select **In the office** or **On the road**, use the down arrow key (↓) to select **On the road**.

Dell Latitude LT

The startup process reaches the screen where you can select **No Network/No CD**, **Network**, or **CD**, press the ENTER key to select **No Network/No CD**.

2. The login window opens. Press CTRL+ALT+DELETE, then the ENTER key to close the Warning: message window.

Enter your network ID and password (the same as you use to log into the computer each day) in the appropriate boxes in the logon window.

If you log in through the Novell client (Figure 4), select the **Workstation only** option. If you log in through the Windows NT client, select **Logon through dial-up networking**.

Click on the **OK** button.

If you use the Novell client:

After logging on and before the Desktop appears, you may see one or both of the messages illustrated in Figures 5 and 6. This is normal and occurs because the computer is not yet connected to the network. Click on the **OK** button in each window to close it. Continue from the *Dial After Login* section.

Figure 4

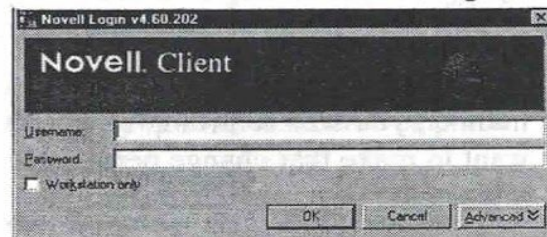


Figure 5

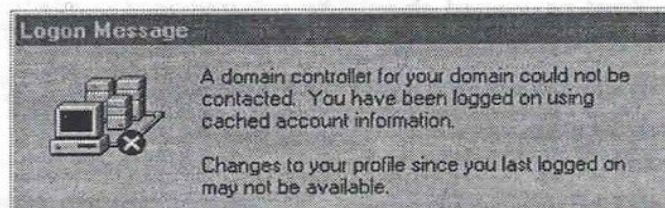
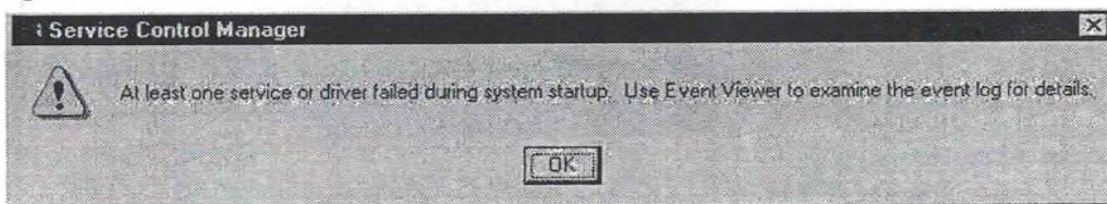
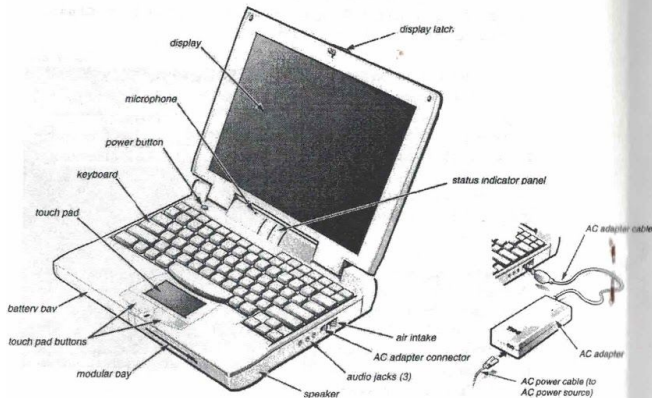
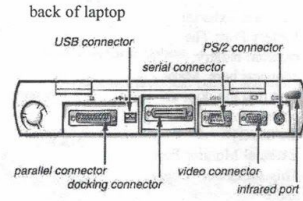
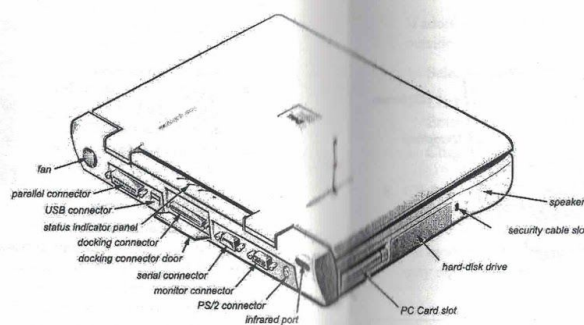


Figure 6

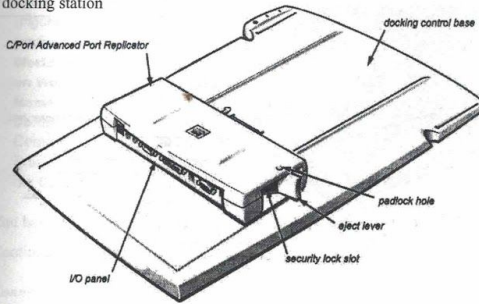


Dell® Latitude® CP and CPI

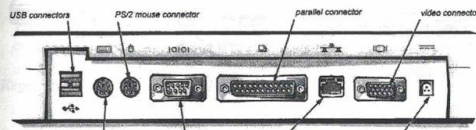
- Parallel connector: The external drive cable or a printer cable connects here.
- Docking connector and door: This connects the computer to the docking station. Make sure that the door is open before docking the computer.
- Monitor connector: This connector is blue and a monitor or projector connects here.
- PS/2 connector: An external mouse or keyboard connects here.
- PC Card slot: The modem and/or network cards connect here. The network card has a wider connector than the modem. **Do not remove either of these cards unless instructed to do so.**



docking station



back of docking station (I/O panel)



Dell® Latitude® CP illustrations used with permission.

device. To see an image, turn on the external device or switch the video image to the computer's display by pressing FN+F8 key combination on the laptop keyboard or the SCROLL LOCK+F8 key combination on an external keyboard.

NOTE: If the display resolution of the laptop computer is greater than what the external device supports, switch to a resolution that the device supports.

CP Question I connected the 3.5" disk drive to the laptop computer
CPi and it does not work. What should I do?

Answer The drive must be connected to the computer before it is powered on. Restart the computer with the drive connected and it will be recognized.

CP Question How do I adjust the audio volume on the laptop
CPi computer?

Answer The FN+PAGE UP key combination (or the SCROLL LOCK+PAGE UP combination on an external keyboard) increases the volume of the built-in speakers and the external speakers, if attached.

The FN+PAGE DOWN key combination (or the SCROLL LOCK+PAGE DOWN combination on an external keyboard) decreases the volume of the built-in speakers and the external speakers, if attached.

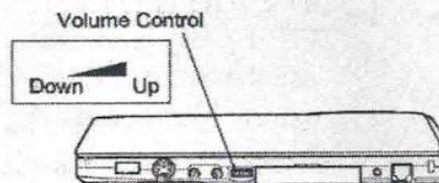
The FN+END key combination (or the SCROLL LOCK+END combination on an external keyboard) enables and disables the built-in speakers and the external speakers, if attached.

LT Question How do I adjust the audio volume on the laptop
computer?

Answer

Right

Figure 43



| | | |
|-----------------|----------|--|
| CP CPI LT | Question | I connected an external mouse to the laptop computer and it does not work. What should I do? |
| | Answer | <p>The mouse must be connected to the computer before it is powered on. Restart the computer and the mouse will be recognized.</p> <p>When you attach a mouse to the computer, the touch pad is automatically disabled. If you disconnect the mouse, you must shut down the computer before the touch pad resumes operation.</p> |

| | | |
|-----------------|----------|---|
| CP CPI LT | Question | The laptop computer is beeping continuously after it has been on for a period of time. What should I do? |
| | Answer | <p>The AC adapter may not be functioning properly and the computer has been running on battery power. The battery may be low on charge and the beeps are a warning of this.</p> <ol style="list-style-type: none"> 1. Position the mouse pointer over the power icon (<i>Figure 44</i>) on the right side of the Task Bar near the clock. A small window opens containing an indication of how much charge remains in the battery in both time and percentage. |



Figure 44

2. If the battery is low on charge, check to make sure that the AC adapter is plugged into a working power source and is also plugged securely into the laptop or docking station.
3. If the AC adapter is plugged in properly, it is possible that the AC adapter or power cord need replaced, or the power source is not functioning properly. Save your work and shut down the computer. Call the Help Desk at 219.455.6950

| | | |
|-----------------|----------|--|
| CP CPI LT | Question | How can I tell how much charge remains in the battery in the laptop computer? |
| | Answer | Position the mouse pointer over the power icon (<i>Figure 44</i>) in the lower right corner of the screen near the clock. A small window opens containing an indication of how much charge remains in the battery in both time and percentage. |